

CALCIUM FLAT PLATE

B A T T E R I E S



Description

The Heritage GC battery is a calcium flat plate battery specifically designed for power plant applications. Its copper inserted posts are designed to efficiently handle high load currents while the thick positive plates sustain long power demands. The time proven Slide-Lock™ post seal provides flexibility between the battery post and cover which compensates for natural plate growth as the battery ages. This virtually eliminates post seal leaks assuring optimum performance over the battery's useful service life.

Features

NOMINAL CAPACITY

- 930 Ah to 3900 Ah at the 8 hour rate.

HIGH RATE PERFORMANCE

- Copper inserted posts assure Efficient high rate performance with minimum connector re-torquing requirements.

LIFE

- The battery has an expected design life of 20 years at 77°F under float service.

LOADS

- The battery is designed to handle complex load profiles requiring high load currents as well as long duration discharges.

CONSTRUCTION

- Cover made from Flame Retardant PVC (UL94-V0/L.O.I. 32%) as standard.

APPLICATION

- The battery is ideally suited for power plant, power switching and standby power applications.

MODEL

EXIDE

GC

930 - 3900 Ah

APPLICATIONS:

SWITCHGEAR

Specifications

PLATE THICKNESS:

POSITIVE: 0.30 in/7.6 mm
NEGATIVE: 0.20 in/5.1 mm

PLATE SUSPENSION TYPE:

POSITIVE: Bridge hung
NEGATIVE: Bottom supported

SEDIMENT SPACE: .87 in/22 mm

ELECTROLYTE OVER PLATES:

3.9 in/100 mm

SPECIFIC GRAVITY:

1.215 (1.250 available upon request)

CONTAINER:

Styrene acrylonitrile copolymer
GC-25 to 45 available in optional Flame Retardant PVC (UL94-V0/L.O.I.32%)

COVER:

Made from Flame Retardant PVC (UL94-V0/L.O.I. 32%)

SEPARATORS:

Microporous rubber

BOLT CONNECTORS:

Stainless steel, standard English measure, hex-head

INTERCELL CONNECTORS:

Lead-plated copper

RETAINERS:

"Vitrex" - glass fiber

FLOAT VOLTAGE SETTING:

ACCEPTABLE MIN/MAX: 2.17/2.26 VPC
RECOMMENDED: 2.25 VPC

VENT TYPE:

Flame arrestor, fused alumina

ELECTROLYTE WITHDRAWAL TUBE:

One per cell

POST TYPE:

Lead-plated copper insert
GC-9 to GC-15 - one positive post and one negative post per cell
GC-17 to GC-45 - two positive posts and two negative posts per cell

POST SEAL TYPE:

Slide-Lock™

AVERAGE CELL PERFORMANCE DATA* (Discharge Rates in Amperes**)

1.215 SP. GR. ELECTROLYTE AT 77° (25°C). INCLUDING CELL CONNECTORS.

TYPE	NOM. Ah CAP. ¹	72 HR	24 HR	12 HR	8 HR	5 HR	4 HR	3 HR	2 HR	1.5 HR	1 HR	30 MIN	15 MIN	1 MIN
TO 1.75 VPC FINAL														
GC-9	930	18.8	49	86	116	158	182	219	279	324	413	555	649	752
GC-11	1080	21.8	57	100	135	187	217	262	331	390	502	667	790	910
GC-13	1220	24.3	64	112	152	214	249	300	385	450	585	796	922	1056
GC-15	1320	25.7	69	120	165	236	277	332	420	518	662	883	1046	1190
GC-17	1570	30.0	77	140	196	283	335	412	520	640	826	1110	1298	1432
GC-19	1680	31.1	82	150	210	305	363	451	587	710	917	1237	1441	1584
GC-21	1780	31.6	86	158	223	328	390	483	640	772	1005	1364	1580	1730
GC-23	1870	31.9	89	165	234	344	411	516	693	825	1087	1493	1713	1870
GC-25	2260	43.2	115	202	283	422	504	618	756	845	1170	1663	1845	2064
GC-27	2380	44.4	119	212	298	443	533	660	800	921	1248	1745	1970	2197
GC-29	2490	45.5	123	220	311	466	560	691	840	970	1324	1859	2093	2324
GC-31	2570	46.0	126	227	321	485	585	724	882	1018	1396	1968	2211	2445
GC-33	2660	46.4	128	233	332	502	608	756	917	1095	1465	2024	2324	2560
GC-35	3430	61.4	167	313	429	583	671	799	960	1148	1479	2012	2412	2798
GC-37	3540	61.9	171	322	443	606	697	831	1017	1215	1539	2079	2517	2909
GC-39	3650	62.0	172	328	456	627	722	862	1074	1283	1596	2139	2615	3014
GC-41	3720	62.0	174	334	466	646	745	891	1131	1337	1650	2211	2710	3112
GC-43	3820	62.0	175	340	478	664	766	917	1170	1377	1701	2288	2803	3205
GC-45	3900	62.0	176	345	487	681	786	942	1200	1400	1749	2376	2891	3292
TO 1.81 VPC FINAL														
GC-9	930	16.7	46	82	110	148	169	200	245	283	351	449	506	582
GC-11	1080	19.5	53	95	128	175	201	239	294	340	426	549	616	704
GC-13	1220	21.9	60	106	144	201	231	273	342	396	497	642	719	817
GC-15	1320	23.7	65	114	156	221	257	304	371	452	562	714	815	922
GC-17	1570	26.4	72	134	186	263	311	378	435	563	702	873	1012	1164
GC-19	1680	28.0	76	140	197	285	337	413	527	624	779	992	1123	1289
GC-21	1780	29.9	81	150	211	306	362	446	572	677	854	1095	1232	1408
GC-23	1870	31.5	86	158	222	322	382	473	626	748	923	1170	1336	1524
GC-25	2260	39.1	106	192	268	392	468	570	618	680	994	1399	1439	1635
GC-27	2380	41.3	112	202	283	416	495	602	705	794	1039	1386	1536	1743
GC-29	2490	43.1	116	210	295	436	520	635	752	849	1125	1499	1632	1845
GC-31	2570	44.4	120	216	304	453	544	667	782	882	1168	1568	1724	1944
GC-33	2660	46.0	124	224	315	470	565	694	816	946	1226	1618	1812	2037
GC-35	3430	55.4	153	295	407	548	624	731	855	1000	1257	1636	1881	2098
GC-37	3540	57.4	158	303	420	569	648	761	913	1062	1308	1687	1956	2181
GC-39	3650	60.7	166	314	433	588	671	788	954	1122	1342	1713	2039	2260
GC-41	3720	60.7	166	317	442	606	692	813	1003	1151	1374	1773	2113	2334
GC-43	3820	60.7	171	328	454	614	698	819	1017	1175	1416	1838	2186	2404
GC-45	3900	60.7	172	333	461	622	708	832	1000	1135	1456	1964	2254	2468

*Ampere values listed represent 100% of the cell's capacity. Initial capacity shall be a minimum of 90% of these values per IEEE 450.

**1.215 S.G. electrolyte at 77°F (25°C) includes intercell connector drop.

¹Nominal AMP hour capacity at the 8 hour rate.

All data subject to change without notice.

Capacities - Dimensions - Weights

**TYPE	Nom. Ah CAP.	OVERALL DIMENSIONS						WEIGHTS - VOLUMES								OUTLINE DRAWING: SEE CATALOG SECTION
		LENGTH (L)		WIDTH (W)		HEIGHT (H)		UNPACKED		DOMESTIC PACKED		ELECTROLYTE ONLY 1.215 S.G.				
		in	mm	in	mm	in	mm	lbs	kgs	lbs	kgs	lbs	kg	gal	ℓ	
2GC-9	930	12.4	315	15.1	384	26.4	671	375	170	395	179	136	62	13.6	51	57.40
2GC-11	1080							410	185	430	195	127	57	12.7	48	
2GC-13	1220							445	202	465	211	119	54	11.9	45	
GC-15	1320							485	220	505	229	111	50	11.1	42	
GC-17	1570	16.6	422	15.1	384	26.4	671	585	265	607	275	163	74	16.3	62	
GC-19	1680							620	281	642	291	155	70	15.5	59	
GC-21	1780							655	297	677	307	147	67	14.7	56	
GC-23	1870							695	315	717	325	139	63	13.9	53	
GC-25	2260	12.4	315	15.1	384	26.4	671	440	199	460	209	123	56	12.3	46	
GC-27	2380							460	209	480	218	119	54	11.9	45	
GC-29	2490							480	217	500	227	115	52	11.5	43	
GC-31	2570							495	224	515	233	111	50	11.1	42	
GC-33	2660							515	233	535	243	107	48	10.7	40	
GC-35	3430	16.6	422	15.1*	384*	26.4	671	610	277	632	287	160	72	16.0	60	
GC-37	3540							630	285	652	296	156	71	15.6	59	
GC-39	3650							650	295	672	305	152	69	15.2	57	
GC-41	3730							665	302	687	311	148	67	14.8	56	
GC-43	3820							685	311	707	321	144	65	14.4	54	
GC-45	3900							705	320	727	330	140	63	14.0	53	

*NOTE: "Width" dimensions determines required rack length, as cells are arranged on racks with plates parallel to the rails.
 **Suffix number indicates Total Plates Per Cell.

Short Circuit Current

TYPE	AMPS
GC-9	5323
GC-11	6477
GC-13	7540
GC-15	8528
GC-17	10160
GC-19	11231
GC-21	12311
GC-23	13324
GC-25	14750
GC-27	15714
GC-29	16604
GC-31	17510
GC-33	18408
GC-35	20735
GC-37	21612
GC-39	22456
GC-41	23266
GC-43	24035
GC-45	24769

MODEL
EXIDE
GC

Heritage™

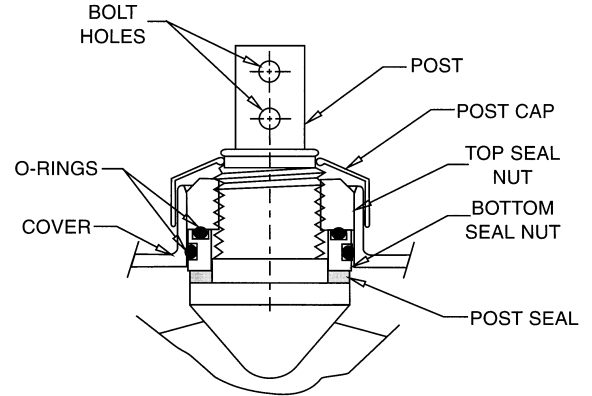
CALCIUM FLAT PLATE

B A T T E R I E S

Accessories

Slide-Lock™ Post Seal

	CATALOG NUMBER
CELL NUMBER SET: 1-12	802360
1-24	802361
1-60	802362
1-120	802363
1-240	802364
1-300	802365
†PORTABLE HYDROMETER	81332
†HYDROMETER HOLDER - WALL MOUNT	27717
†THERMOMETER (Portable or funnel-type flame arrestor mounting)	88330
†CELL LIFTING DEVICE: GC-9 thru 15	84974
GC-17 thru 23	84975
GC-25 thru 45	84973
FLAME ARRESTOR: (Supplied with each cell) GC-9 thru 45	83437



†Included with 12 or more cells:

For complete information about these and all other accessories, see Catalog **SECTION 80.05**.

All data subject to change without notice.



Represented by:

When ordering new batteries, also remember to properly recycle your old lead batteries. Federal and state regulations require lead-acid batteries be recycled. EnerSys' nationwide service organization can arrange pickup, transportation to and recycling at any one of our company affiliated smelters. Call 1-800-972-7372 for more information.



Corporate Office: P.O. Box 14145, Reading, PA 19612-4145
610-208-1991 • 800-538-3627
FAX 610-372-8613

Sales Offices
Eastern Region: 215-491-3700 • 800-346-4402
FAX 215-491-2304
Western Region: 510-887-2046 • 888-887-2046
FAX 510-887-6309

International: 610-208-1843
FAX 610-208-1851

EnerSys Canada: 905-790-1212
FAX 905-790-7070

EnerSys Argentina: 54-11-4736-3000
FAX 54-11-4736-3200

EnerSys de Mexico: 52-83-656-620
FAX 52-83-656-621

Acumuladores Narvit S.A., Brazil: 55-11-6412-7522
FAX 55-11-6481-4019

Visit us on the web at: www.enersysstationary.com

Please check our website for literature updates