

The PowerSafe GT product line ranges from 930Ah to 3900Ah, and is the largest clear flame retardant flooded cell in the industry. The PowerSafe GT battery features flat plate construction with antimony alloy grids ideal for any long duration float application requiring periodic cycling. Since 1978, the GT has been a standard in the telecommunication industry. It is ideal for central office and mobile switch applications.

With the multi-directional design of the post, PowerSafe GT cells are easily configurable in any orientation, with cells either parallel to the rack support rails to optimize battery system footprint or perpendicular to the rails for easier element inspection. The new post design enables cell maintenance without taking the entire battery system offline. This is due to the ability to use four intercell connectors regardless of the cell orientation. Two connectors can be left in operation while the other two connectors are being remade.

The PowerSafe GT product line also employs EnerSys' exclusive Slide Lock™ post seal that allows natural plate growth over time without degrading the seal and an innovative tongue and groove jar-to-cover seal to prevent leaks.

## Features & Benefits

- Capacity Range: 930Ah - 3900Ah
- Flat Plate construction-Antimony grid alloys. Well suited for long duration, float applications.
- Largest single cell battery (up to 3900Ah) in a clear flame retardant jar.
- Optional Flame Retardant (UL94-VO/L.O.I. 32%) container.
- Slide Lock™ Post Seal allows natural plate growth without degrading post seal.
- Innovative tongue and groove jar-to-cover seal.
- Configurable with plates either parallel (optimize footprint) or perpendicular (inspection of the element) to rack support rails.



## RANGE SUMMARY

## NEBS Certified

## General Specifications

Type*	Number of Cells	Nominal Voltage (V)	Nominal Capacity (Ah) @ 8hr rate to 1.75Vpc @ 77°F (25°C)	Nominal Dimensions***						Typical Weight							
				Length**		Width		Height		Unpacked		Domestic Packed		Electrolyte Only 1.215 S.G.			
				mm	in	mm	in	mm	in	kg	lbs	kg	lbs	kg	lbs	L	gal
2GT-9	2	4	930	315	12.4	384	15.1	693	27.3	166	367	175	387	62	136	51	13.6
2GT-11	2	4	1080	315	12.4	384	15.1	693	27.3	182	402	191	422	58	127	48	12.7
2GT-13	2	4	1220	315	12.4	384	15.1	693	27.3	198	436	207	456	53	118	45	11.8
GT-15	1	2	1680	315	12.4	384	15.1	693	27.3	157	347	166	367	65	144	54	14.4
GT-17	1	2	1800	315	12.4	384	15.1	693	27.3	165	364	174	384	63	140	53	14.0
GT-19	1	2	1960	315	12.4	384	15.1	693	27.3	173	382	182	402	62	136	51	13.6
GT-21	1	2	2110	315	12.4	384	15.1	693	27.3	182	401	191	421	60	132	50	13.2
GT-23	1	2	2540	384	15.1	422	16.6	693	27.3	219	483	229	505	84	185	70	18.5
GT-25	1	2	2720	384	15.1	422	16.6	693	27.3	227	501	237	523	82	181	68	18.1
GT-27	1	2	2880	384	15.1	422	16.6	693	27.3	236	520	246	542	80	177	67	17.7
GT-29	1	2	3030	384	15.1	422	16.6	693	27.3	244	538	254	560	78	173	65	17.3
GT-31	1	2	3180	384	15.1	422	16.6	693	27.3	253	557	263	579	77	169	64	16.9
GT-33	1	2	3300	384	15.1	422	16.6	693	27.3	264	583	274	605	75	165	62	16.5
GT-35	1	2	3430	384	15.1	422	16.6	693	27.3	273	601	283	623	73	161	61	16.1
GT-37	1	2	3540	384	15.1	422	16.6	693	27.3	281	620	291	642	71	157	59	15.7
GT-39	1	2	3650	384	15.1	422	16.6	693	27.3	289	638	299	660	69	153	58	15.3
GT-41	1	2	3730	384	15.1	422	16.6	693	27.3	298	657	308	679	67	149	56	14.9
GT-43	1	2	3820	384	15.1	422	16.6	693	27.3	306	675	316	697	65	144	55	14.4
GT-45	1	2	3900	384	15.1	422	16.6	693	27.3	314	693	324	715	63	140	53	14.0

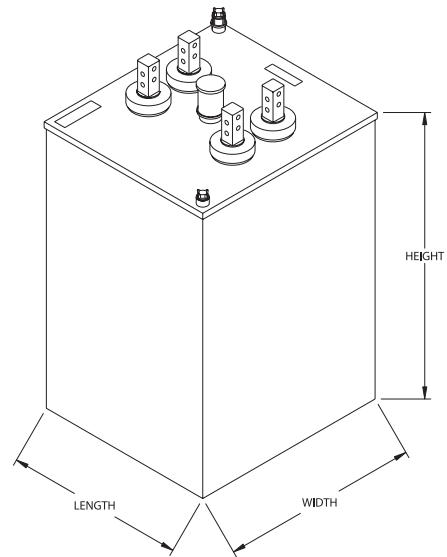
\* Suffix number indicates total plates per cell. Prefix indicates number of cells per jar.

\*\* 0.25" must be added between cells for spacing purposes when calculating total battery length.

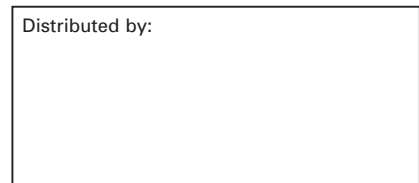
\*\*\*Overall dimensions represent the GT-9 thru GT-21 with plates oriented perpendicular to rack rails and GT-23 thru GT-45 with plates oriented parallel to rack rails. For optional GT-23 thru GT-45 with plates perpendicular to rack rails, length and width dimensions must be switched.

## SPECIFICATIONS

- PLATE THICKNESS:**  
 Positive: 0.30 in/7.6 mm  
 Negative: 0.20 in/5.1 mm
- PLATE DIMENSIONS:**  
 Height                      Width  
 Pos: 17.6 in/447 mm    12.7 in/323 mm  
 Neg: 17.6 in/447 mm    12.7 in/323 mm
- SEDIMENT SPACE:**  
 1.32 in/34 mm
- ELECTROLYTE OVER PLATES:**  
 3.40 in/86 mm
- CONTAINER:**  
 Styrene Acrylonitrile Copolymer,  
 GT-09 to GT-45,  
 Optional flame retardant (UL94-VO/L.O.I. 32%) PVC, GT-15 to GT-45  
 Optional flame retardant (UL94-VO/L.O.I. 32%) PC, GT-09 to GT-13
- COVER:**  
 Flame Retardant PVC,  
 UL94-VO/L.O.I. 32%
- SEPARATORS:**  
 Microporous rubber
- RETAINERS:**  
 "Vitrex"- glass fiber
- POST TYPE:**  
 Cast Lead Posts,  
 GT-9 through GT-13 Single Post  
 GT-15 through GT-45 Double Posts
- POST SEAL TYPE:**  
 Slide-Lock™
- PLATE SUSPENSION TYPE:**  
 Positive: Bridge hung  
 Negative: Bottom supported
- ELECTROLYTE WITHDRAWAL TUBE:**  
 One per cell
- VENT TYPE:**  
 Flame Arrestor, Fused Alumina
- FLOAT VOLTAGE SETTING:**  
 Acceptable min/max: 2.15/2.22 VPC  
 Recommended: 2.20 VPC
- SPECIFIC GRAVITY:**  
 1.215 at 77°F (25°C)
- BOLT CONNECTORS:**  
 Stainless steel, standard English measure, hex-head
- INTERCELL CONNECTORS:**  
 Lead-plated copper



Distributed by:



**EnerSys**  
 P.O. Box 14145  
 Reading, PA 19612-4145  
 USA  
 Tel: +1-610-208-1991  
 +1-800-538-3627  
 Fax: +1-610-372-8613

**EnerSys EMEA**  
 Brussels, Belgium  
 Tel: +32 (0)2 247 94 47

**EnerSys Asia**  
 Guangdong, China  
 Tel: +86-755-2689 3639

Printed in USA  
 © 2005 EnerSys. All rights reserved.